



Pressure Mapping Case Study Summary

February, 2009

The following outlines the results of a pressure study performed with a test subject on various surfaces including Broda's Comfort Tension Seating™. Testing was performed with a Tekscan Model 5330- 32 x 32 Element Sensory Array

The sensor processing software calculated the following information:

Peak Pressure (mmHg) - Highest reading recorded at one ore more sensors

Average Contact Pressure (mmHg) - Mathematical average of all non-zero elements

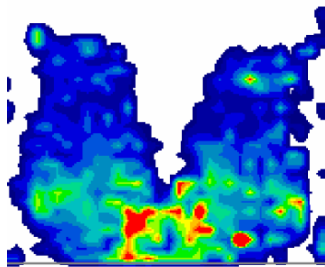
Subject: Male, 5'6", 200 lbs.

Each test chair had armrests removed. Test subject's feet remained flat on the floor or footrest (with knees at an approx. 90° angle) to maintain a consistent body position throughout each test for accuracy purposes.(except when tested in the tilt and recline position in the Broda 785)

Surfaces and Results:

Peak and average pressures are average after one hour of sitting

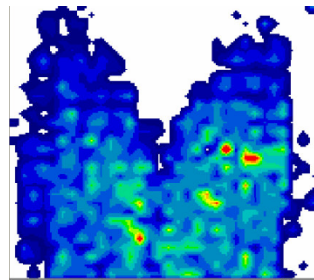
Wheelchair Sling with
No Additional Padding



Peak Pressure:
79.4 mmHg

Average Pressure:
20.5 mmHg

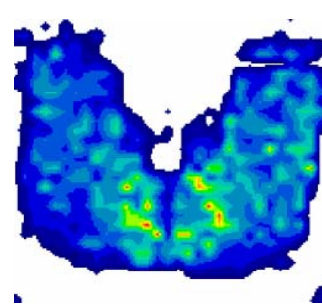
Leading Pressure Relief
Air Cushion on Wheelchair
Sling



Peak Pressure:
46.3 mmHg

Average Pressure:
16.8 mmHg

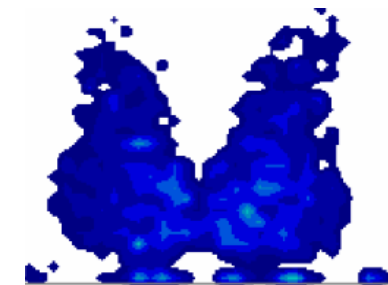
Broda 785 Comfort Tension Seating™
with Broda Terrycloth Covered 1" Foam Pad
Upright Position



Peak Pressure:
44.8 mmHg

Average Pressure:
16.9 mmHg

Broda 785 Comfort Tension Seating™
with Broda Terrycloth Covered 1" Foam Pad
Approx. 38° Full Seat Tilt, 45° Semi Recline



Peak Pressure:
20.3 mmHg

Average Pressure:
8.0 mmHg

Results: The Broda 785 Comfort Tension Seating™ with terry cloth covered 1" foam pad, and utilization of full seat tilt and partial recline, achieves the lowest peak and average pressure readings of the above tests.

The information and images in this document are for reference purposes only and depicts results applicable only to the specific test conditions and test subject that was studied.